



NEWS FROM THE FLOCK

September 2024 / Issue 1

OFFICERS

President
Andrew George
Vice President
Megan Corrigan
Secretary
Steve Ford
Treasurer
Liz Mangile

BOARD SUPPORT

Newsletter Editor
Cindy Ford
cford@pittstate.edu

Web Master
Bob Mangile
sperry-galligar.com

Membership
Diane McCallum

WELCOME BACK

I hope you had a chance to do a little birding this summer. I had a better chance of seeing birds early in June—in between the rains, but now it seems rare to even hear birds with the hot and dry weather. I have to say there were some differences in bird numbers and sightings this summer. For example, I did not see as many hummingbirds as usual, there have not been as many turkeys around our place, and there are some birds we just did not see as we had in previous years. We sure have the squirrels and rabbits though causing havoc with my garden. Every year brings a different community of species. Hope your summer was a good one. We have exciting plans for the Sperry-Galligar Audubon year, so stay tuned.

Plan to attend the meetings this year to hear great speakers. See you at the end of the month.

Next Program

Thursday, 7:00
September 26
Yates 102
Pittsburg State Univ

“Snakes of the Genus Pituophis” by Cameron Kruse. See several live animals and hear about habitat loss, peculiarities of some species, and learn more about bull snakes, pine snakes, and gopher snakes.

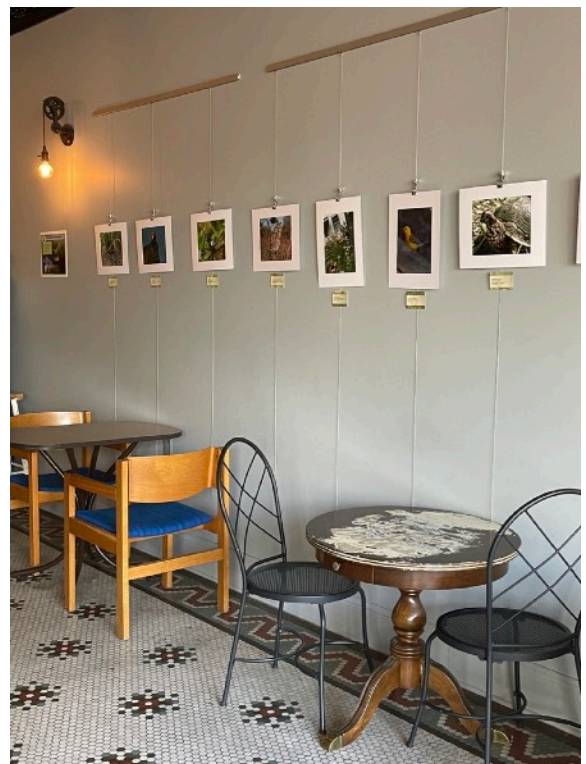
FIRST ANNUAL PHOTO EXHIBIT

Featured at Root Coffeehouse through the month of September

Wildlife photos were submitted by members of Sperry-Galligar Audubon Chapter last May in preparation for the exhibit. The beautiful photos reflect animals in our area.

Be sure to drop by Root Coffeehouse in downtown Pittsburg to see the array of photos.

Thank you to Root Coffeehouse for hosting our exhibit.



Board Minutes...Steve Ford

August 18, 2024

The meeting was held at the lab at PSU's Natural History Reserve west of Pittsburg. Present were Mavis Benner, Wayne Bockelman, Cindy and Steve Ford, Kathy and Terry Fox, and Diane McCallum. President Andy George officiated. Monthly meetings of S-G Audubon will continue as per previous years on the PSU campus, Yates 102, 7 p.m. Yates has been reserved through 2024. Board meetings will start at 6 p.m., Heckert-Wells Hall, third floor lounge.

Guest Speakers:

September 26: Snakes of the Genus *Pituophis*, Cameron Kruse

October 24: Working on a speaker. Note: October's meeting will be the third Thursday, not the last Thursday as usual to avoid potential conflicts with Halloween.

November: No meeting *per se* to avoid Thanksgiving.

December 5: First Thursday as per usual. Turkeys, Meagan Duffee (Tentative)

January 30 or February 27: (Depending on school sports schedules) Guiding for Elk and Other Species (hunting), John Imhoff.

January or February: nothing scheduled yet.

March: Re-establishing the Ozark Chinquapin, Jeff Cantrell.

April: Purple Martins of the Amazon, Bill Warnes

May: Picnic. No speaker scheduled yet.

Other Business

*Andy will lead the first bird hike the first Saturday in October. November is tentative.

*S-G Audubon's photo exhibit will start at the Root Coffee House Sep. 1. Ten photos from our members will be exhibited for a month.

*Andy's new graduate student, Gabe McClaim, will be starting a prothonotary warbler project in our area. S-G Audubon is planning to make some 200-300 nest boxes for the project.

*The board voted to donate \$200 to KRPS for its programming, especially "Bird Talk."

Treasurer Report...Liz Mangile

September 2024

Beginning Balance \$ 6087.00

Debits

Postage \$. 68.00

Credits

Memberships\$ 30.00

Earth Day Sales 135.00

Ending Balance \$ 6184.00

Minutes (cont.)

*Andy gave Motus updates.

*An idea for S-G Audubon mugs was discussed but we decided it would not be practical.

*Audubon of Kansas will have a board meeting at the reserve October 19. After the meeting the board members will have a picnic at the Ford's.

*We will see about getting newsletters to national members (Diane, Cindy)

Sperry-Galligar Chapter DUES

September is a good time to pay your local chapter dues for the year. Local Chapter Individual or Family dues are \$15.00. National dues are \$20.00.

Be a part of Sperry-Galligar Audubon.

May PICNIC & PROGRAM SUMMARY by Steve Ford



Our picnic, May 30, at the Homer Cole Community Center was one of our better ones I think, although it got off to a late start. Wal-Mart forgot to cook the chicken, so the beleaguered Mangiles appeared with it late (and wet from rain). All the side dishes prepared by the members were delicious as usual. We had a good turn-out. It's always great to see the several folks that can't always make it to our regular meetings, including the old-timers whose past contributions have made our chapter, pound-for-pound, the strongest in Kansas.

Wayne and Megan had the place bedecked with the club's bird silhouettes. I got to chat with the birds' chief painter, Ruth Sullivan, who reminded me she did fifteen of them. The meadowlark and mockingbird are my favorites - real works of art. They are holding up well despite the fact that Delia has used them for many years for her summer camps.

A special element this year was thanks to Kathy Fox who initiated and organized an end-of-the-year photo event - not really a contest - wherein nearly thirty nature photos by our talented members were displayed anonymously and judged by all attendees. Beautiful all. Ten will be framed and hang in

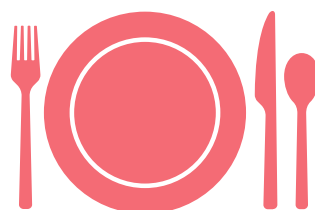
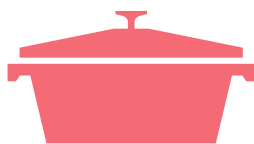
Root coffee house in September. Go see them, especially if you missed the picnic.

President Andy shared some brief remarks, then the group was treated to quite an interesting program on foraging, or as speaker Jesse Gilmore from K-State Extension put it, "Finding Free Food." His talk was dense with information for those who like to graze in the woods. Shame on Mom when she admonished you to eat your carrots. Many in the wild carrot family, such as poison hemlock, can be fatal. Also Jesse did not advise beginners to collect mushrooms, even morels (which struck this Midwesterner as near sacrilegious advice, but that's what the man said). You just have to be careful in your IDs - morels, chicken-of-the-woods, chanterelles, and oyster mushrooms *are* foraged by those who have managed to live past the beginner's stage.

He had ten "Easy Edibles," although "easy" can be relative, as some must be taken at certain growth stages, parts of the plant, etc., and some need to be processed: black walnuts (you may want a special nutcracker) brambles such as blackberries, chickweed (as a garnish), dandelions (as a salad green, jelly, wine), mulberries, acorns (but not raw, they need to be boiled to get rid of the tannins; the white oaks are sweeter than red oaks), persimmons (try the green ones, trust me—just kidding), purslane (unless you're prone to kidney stones - too much oxalic acid), pawpaw, sand plums (raw, jelly, syrup). Take your pig for truffles (just kidding).

The key is to educate yourself. Guides such as those by Peterson, Marie Viljoen, and Ellen Zachos will help, and call your extension agent for advice and help with identification.

Maybe our next picnic should be all foraged food. Or not.



AUDUBON ARTISTIC NOTEBOOK

Emmett Sullivan Photos

Passion Flower or May Pop

Vining plant with tropical looking flowers and edible fruits. Photo taken in Cherokee County, August 29, 2024



Kathy Fox Photos

Eastern Bluebird

This eastern bluebird chick is among the new crop of bluebirds hatched in Kathy's bluebird boxes this summer—in her back yard.





Happenings in Southeast KS

SUMMER IS THE TIME TO TRAVEL

Carly Rowton had an opportunity to travel to the International Crane Foundation near Baraboo, WI this summer and shared some photos from her trip. The cranes are from all over the world and maintained alive in the facility so that visitors can, not only see their beauty, but also watch their behavior. (All photos were taken by Carly.)



Sightings...



Alligator Snapping Turtles

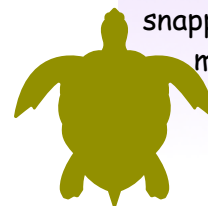
Alligator and common snapping turtles often have mistaken identities.

Common snapping turtles are numerous; alligator snapping turtles are rare.

Common snapping turtles are found in lakes or ponds; alligator snapping turtles are found more likely in rivers or creeks.

.....
Young alligator snapping turtles were released September 12th at the Neosho Wildlife Area near St. Paul as well as a few other sites.

If the reintroduction is successful alligator snappers may become more common.



**Application for Membership
Sperry-Galligar Audubon Society**

For first-time National Audubon membership: send \$20.00 and become a member of both organizations, receive 4 copies of Audubon Magazine annually and 8 copies of Sperry-Galligar Newsletter. Please make your check to: National Audubon Society.

_____ Yes, I wish to become a **FIRST-TIME** member of National Audubon and Sperry-Galligar Audubon. (\$20.00)

For only local renewal membership, send \$15.00 for membership in Sperry-Galligar Audubon and receive the 8 newsletters per year informing you of all our local activities. Please make your check to: Sperry-Galligar Audubon.

_____ Yes, I wish to become a **RENEWING** member of the local chapter. (\$15.00)

Future National Audubon renewals: Send Audubon mailer forms directly to National Audubon Society.

Please print and mail to:

**Sperry-Galligar Audubon Society
816 E. Atkinson Ave.
Pittsburg, KS 66762**

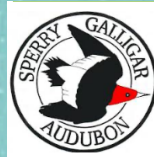
Name _____

Address _____

City, State, Zip Code _____

Phone _____

e-mail _____



Sperry-Galligar Audubon Society

Meetings are held the last Thursday of the month...7:00 p.m. to 9 p.m., Room 102, Yates Hall, PSU Campus, Pittsburg, KS.

No meetings in June, July, or August. (November/December meeting date to be announced.)

Sperry-Galligar Audubon Society
816 E. Atkinson Ave.
Pittsburg, KS 66762

EVENTS & ETC.

Photo Exhibit

Plan to stop by to see Sperry-Galligar Audubon Chapter member wildlife photos at Root Coffeehouse, downtown Pittsburg.

Pay Chapter Dues

See Liz Mangile at our next meeting to pay your annual chapter dues.

Native Plant Sale

This Saturday, Sept 21, there is a native plant sale at the Shoal Creek Conservation Area Nature Center, south of Joplin near I-44. With our hot, dry summers, native plants fare better than nursery plants. Why not a combination of both types of plants for your yard?

ATTENTION ALL MEMBERS. Pay membership dues in September. Please consider paying local membership dues. Our chapter receives 100% of the local dues only. You can subscribe to both local and national. Either way you get the newsletter.